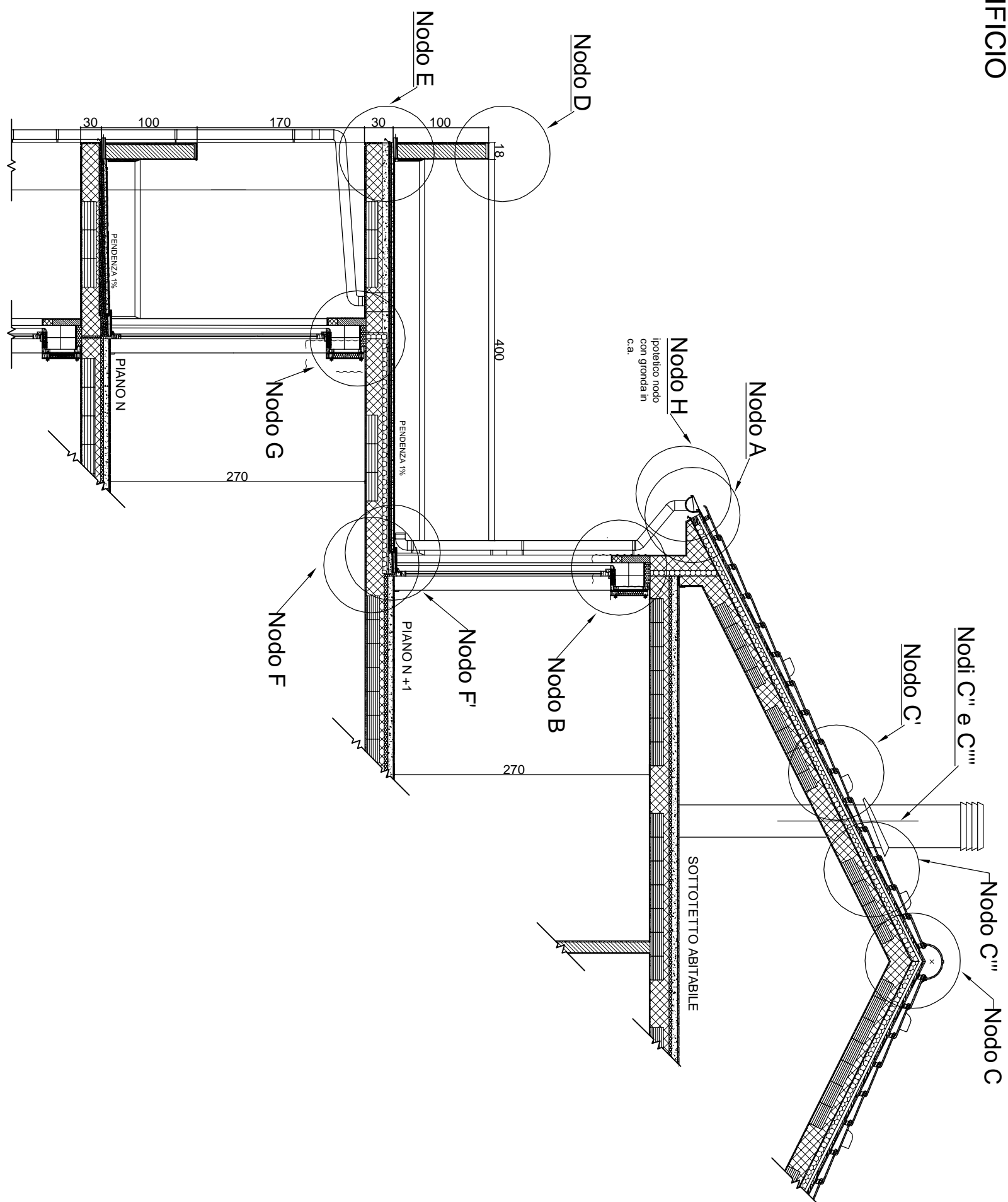


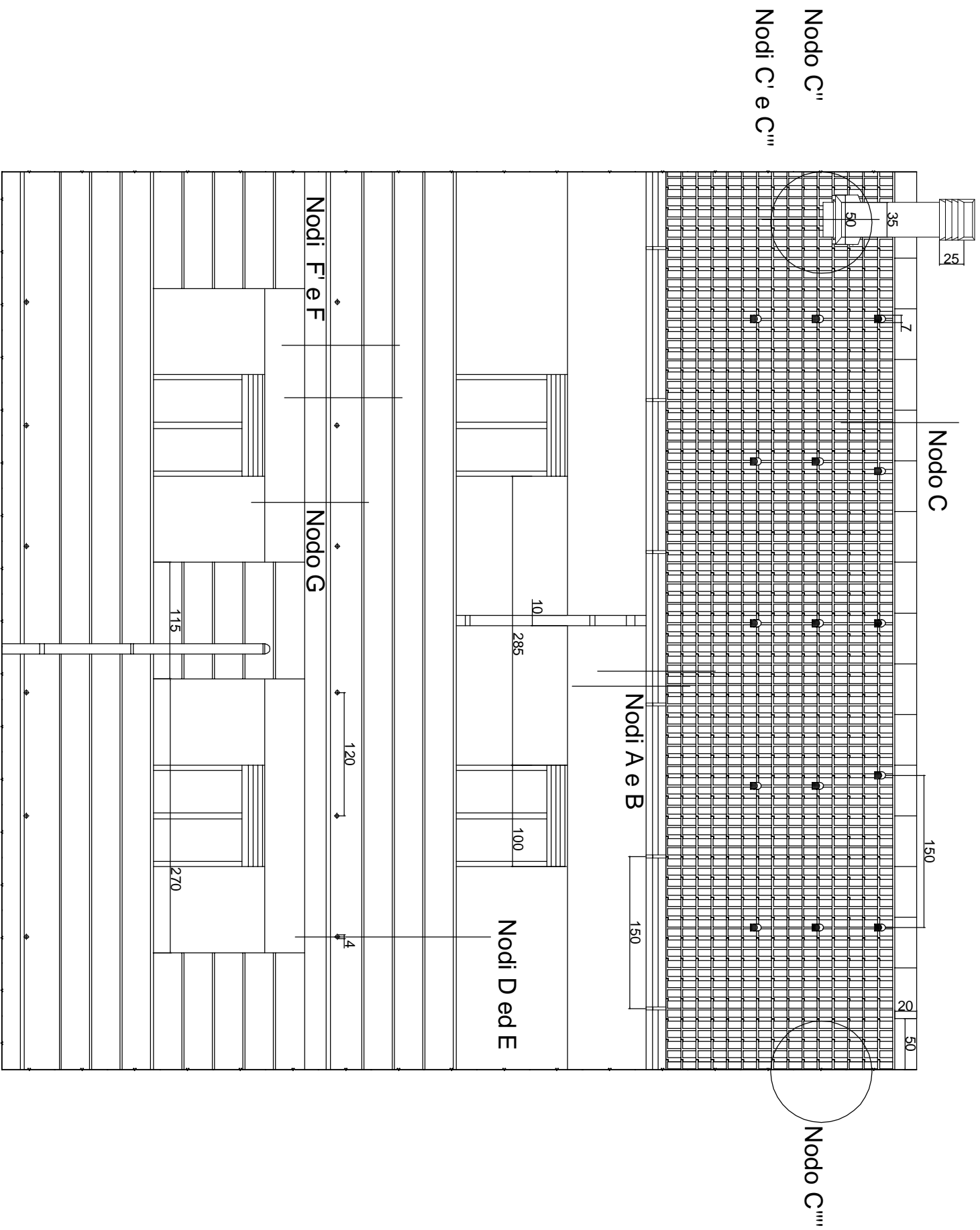
PARTE DI EDIFICIO  
SEZIONATA

quote in cm  
scala 1 : 50



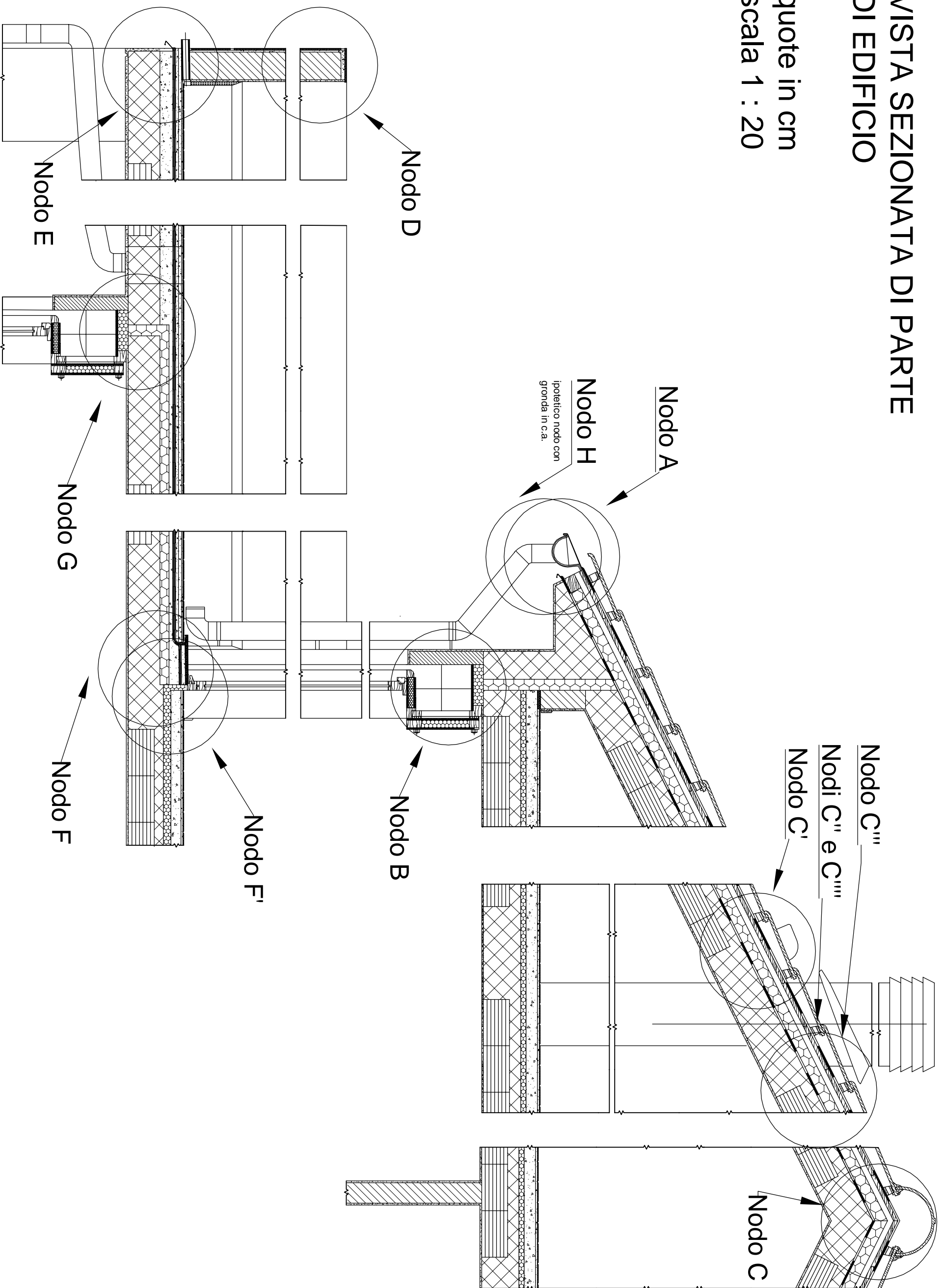
Progetto tecnologico di copertura inclinata

VISTA  
FRONTALE DI  
PARTE DI  
EDIFICIO  
quote in cm  
scala 1 : 50



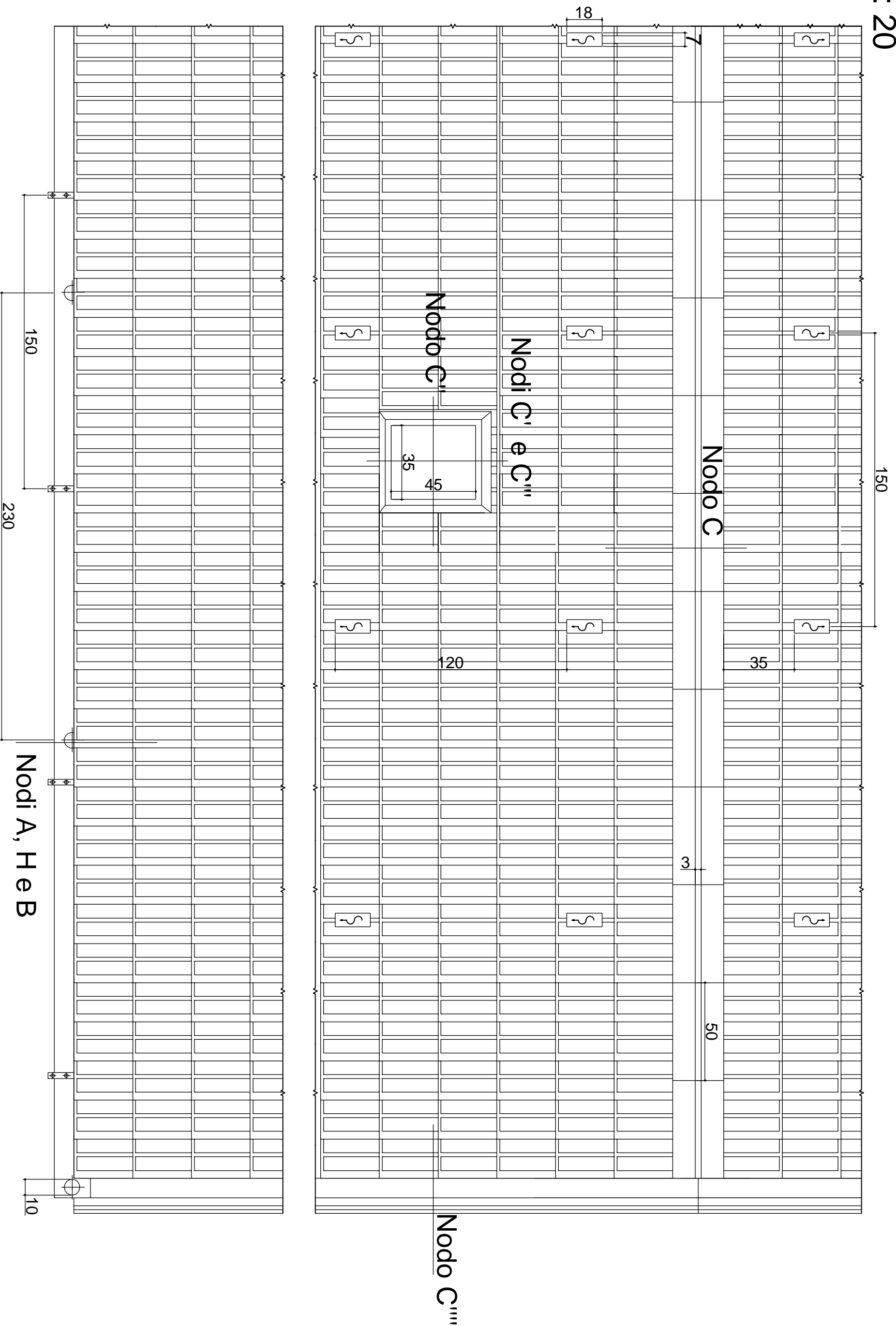
# VISTA SEZIONATA DI PARTE DI EDIFICIO

quote in cm  
scala 1 : 20



# PIANTA DI PARTE DI EDIFICIO

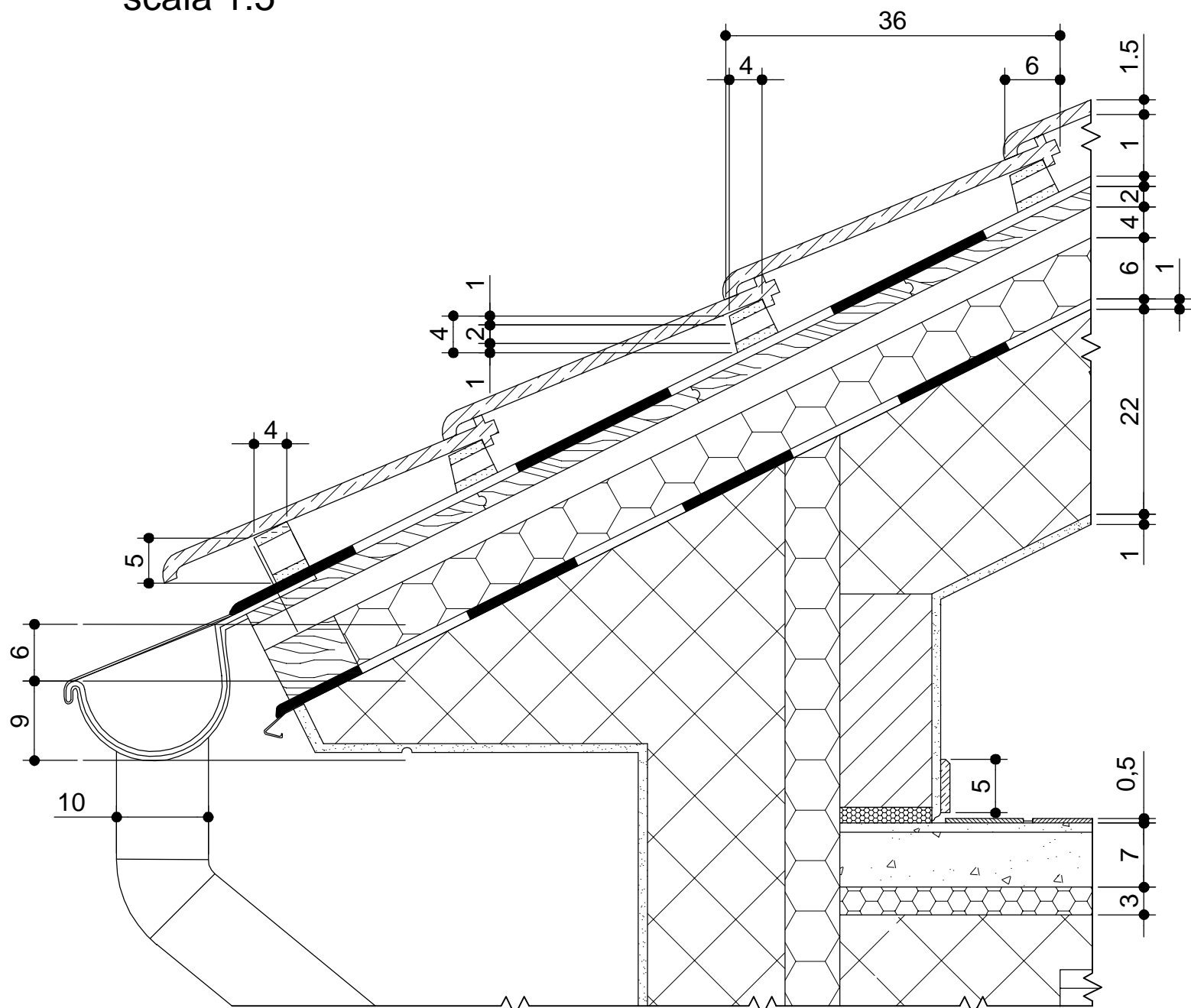
scala 1 : 20



# NODO A

quote in cm

scala 1:5



## SPECIFICHE SU ALCUNI MATERIALI UTILIZZATI:

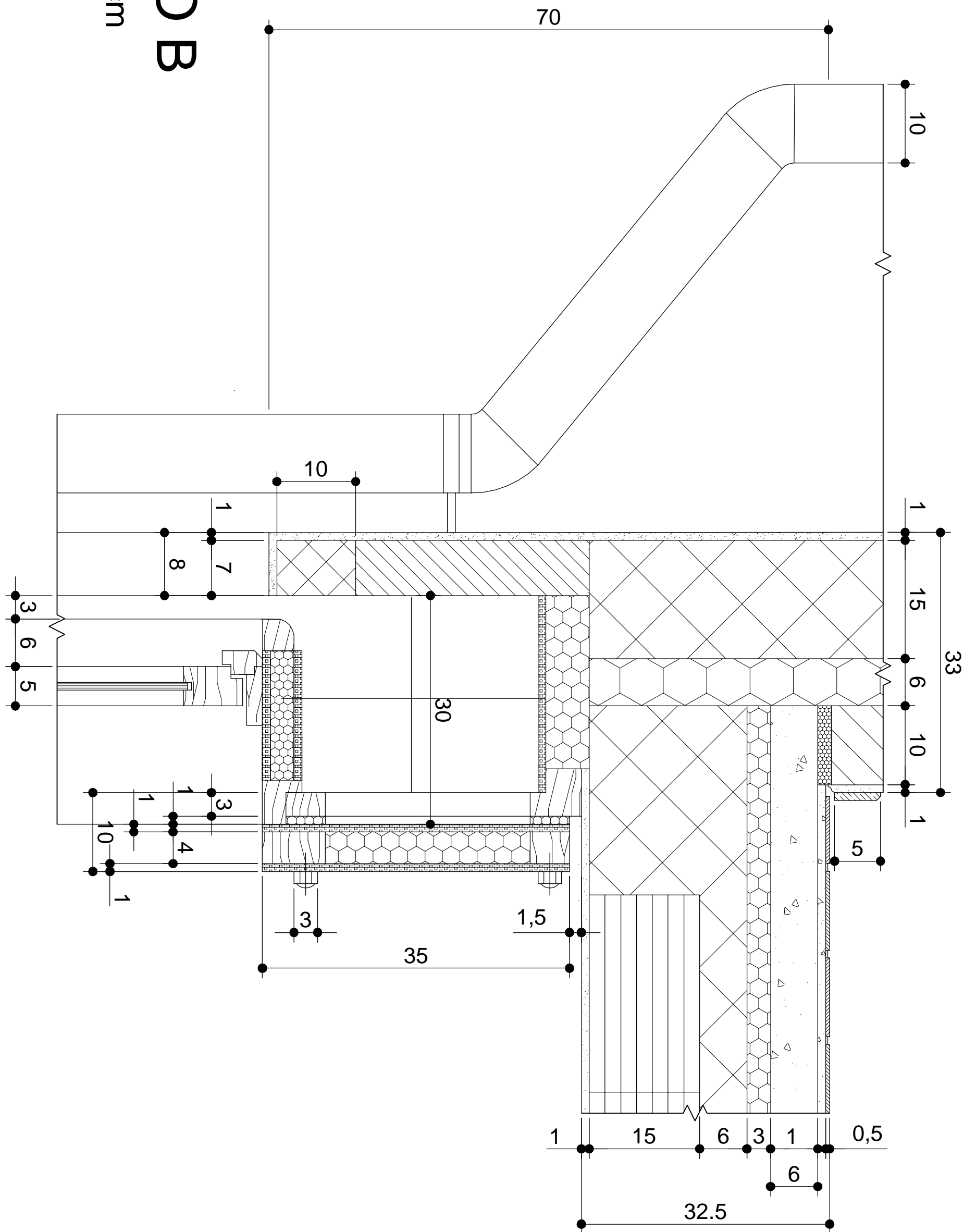
- coppi alla marsigliese
- tavolato 25 x 50 x 2
- listelli in lamiera zincata con perforature per aerazione
- isolamento acustico contro rumore esterno > 40 db
- isolamento acustico contro la pressione sonora di calpestio > 68db

Progetto tecnologico di copertura inclinata

TAV. 5

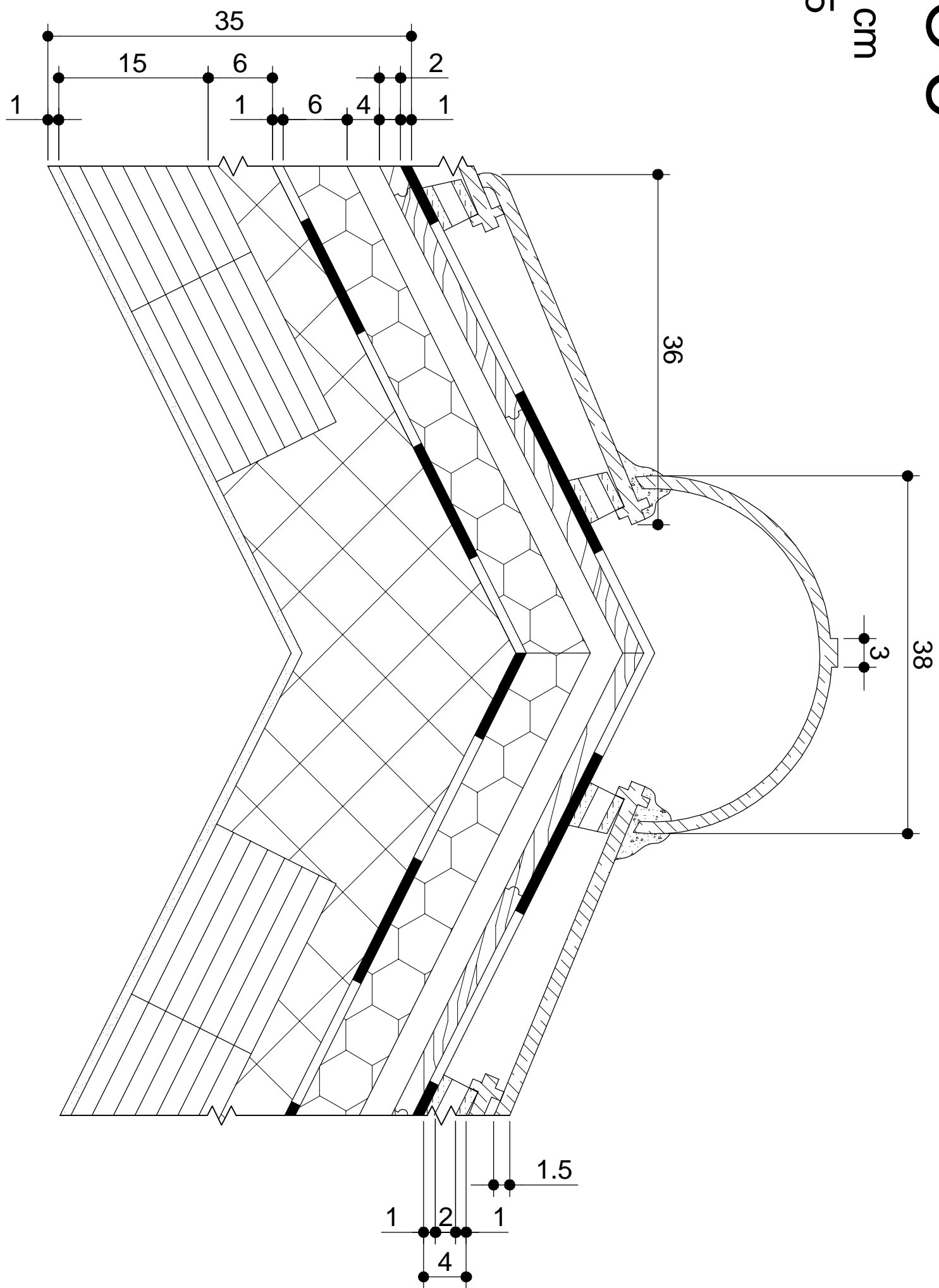
# NODO B

quote in cm  
scala 1:5



# NODO C

quote in cm  
scala 1:5

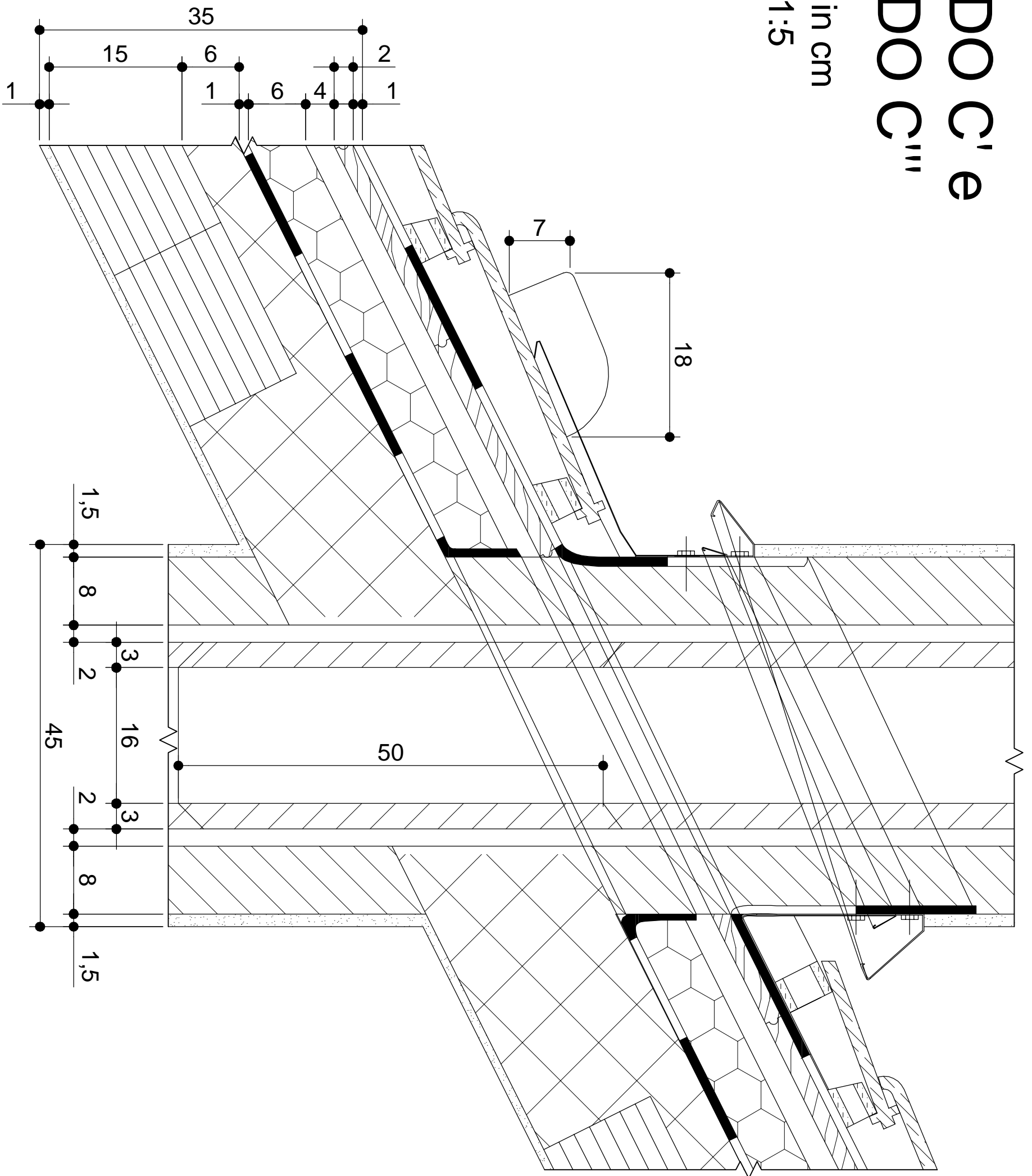


Progetto tecnologico di copertura inclinata

TAV. 7

# NODO C' e NODO C'''

quote in cm  
scala 1:5



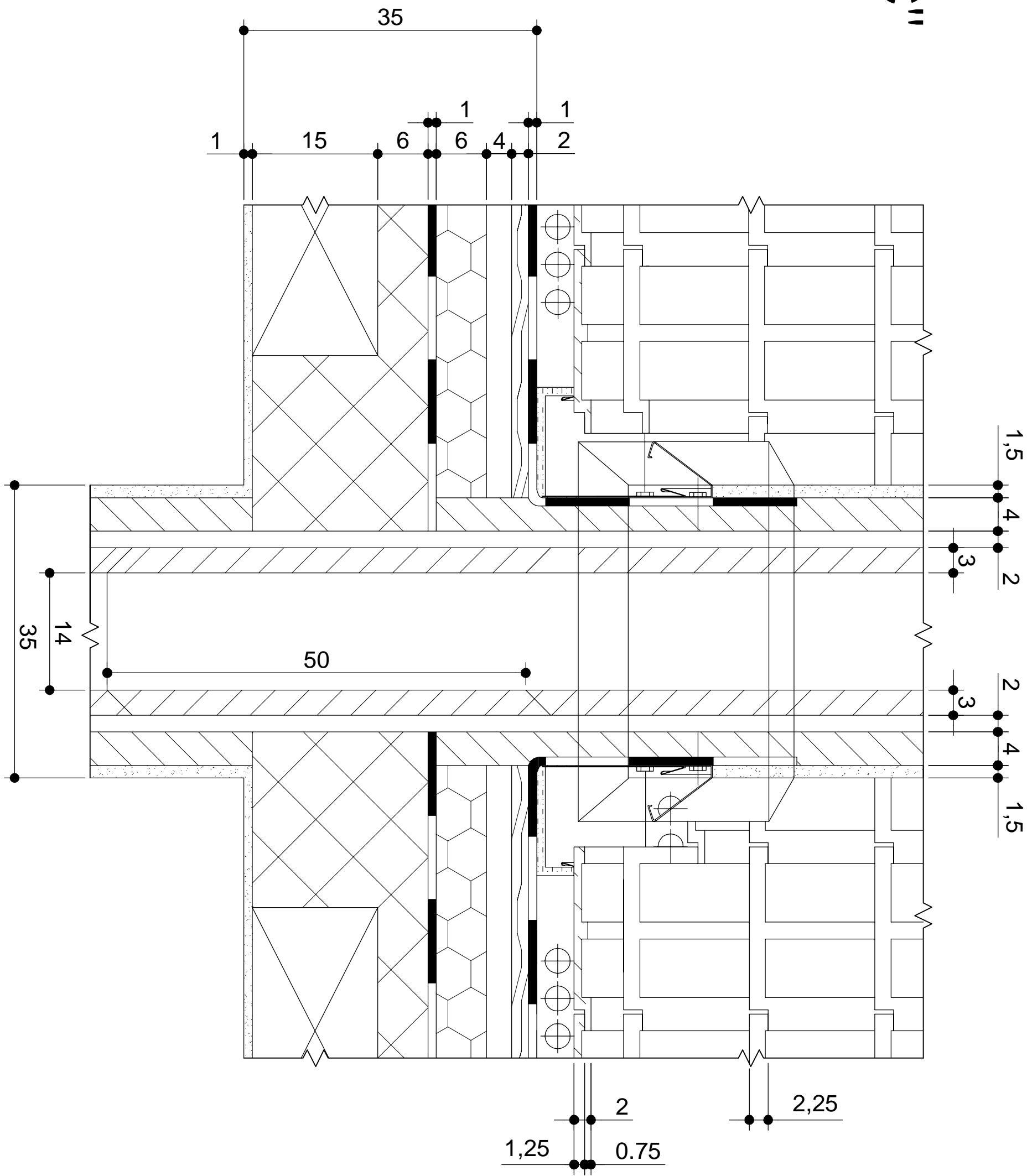
Progetto tecnologico di copertura inclinata

TAV. 8



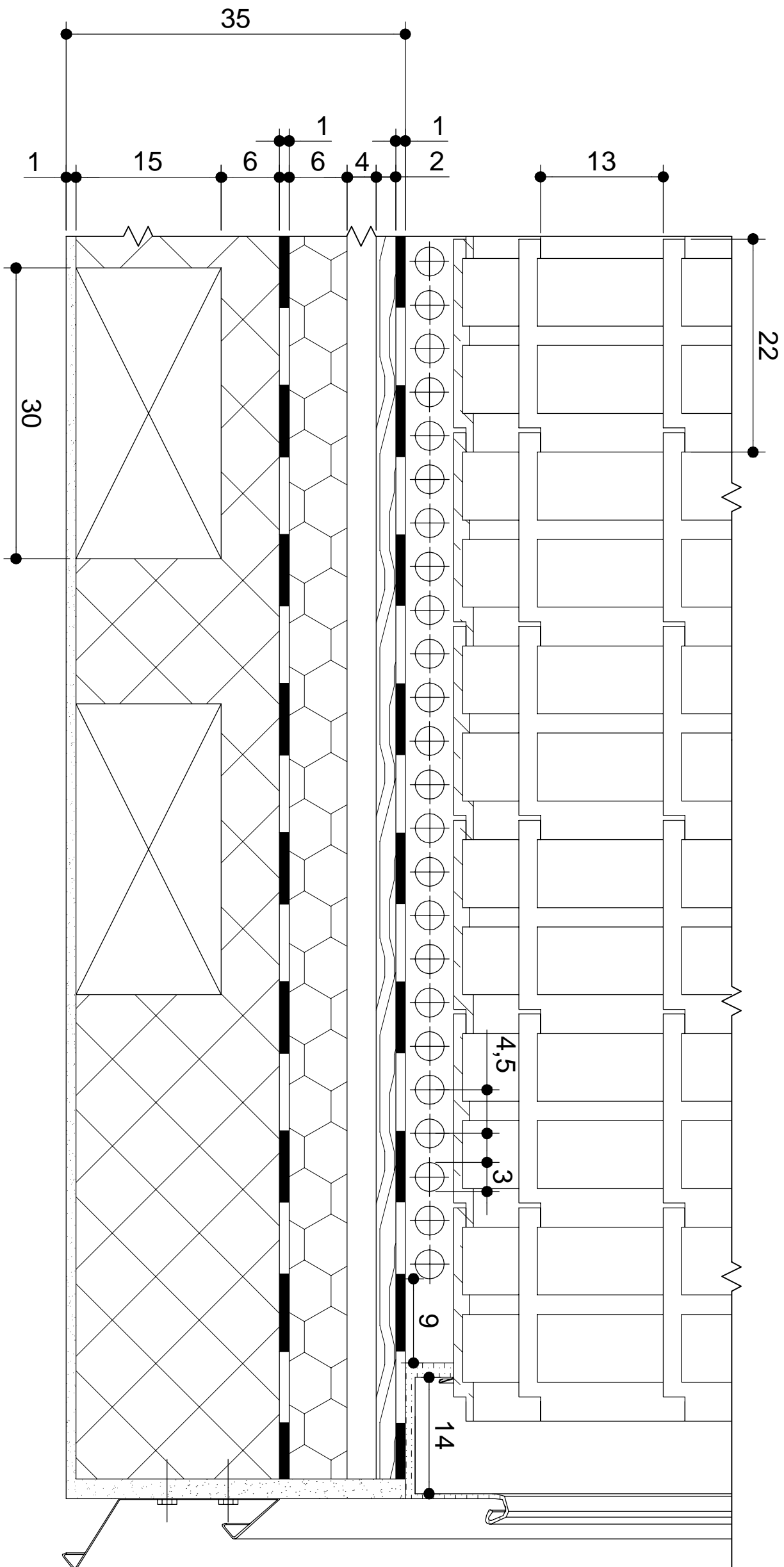
# NODO C''

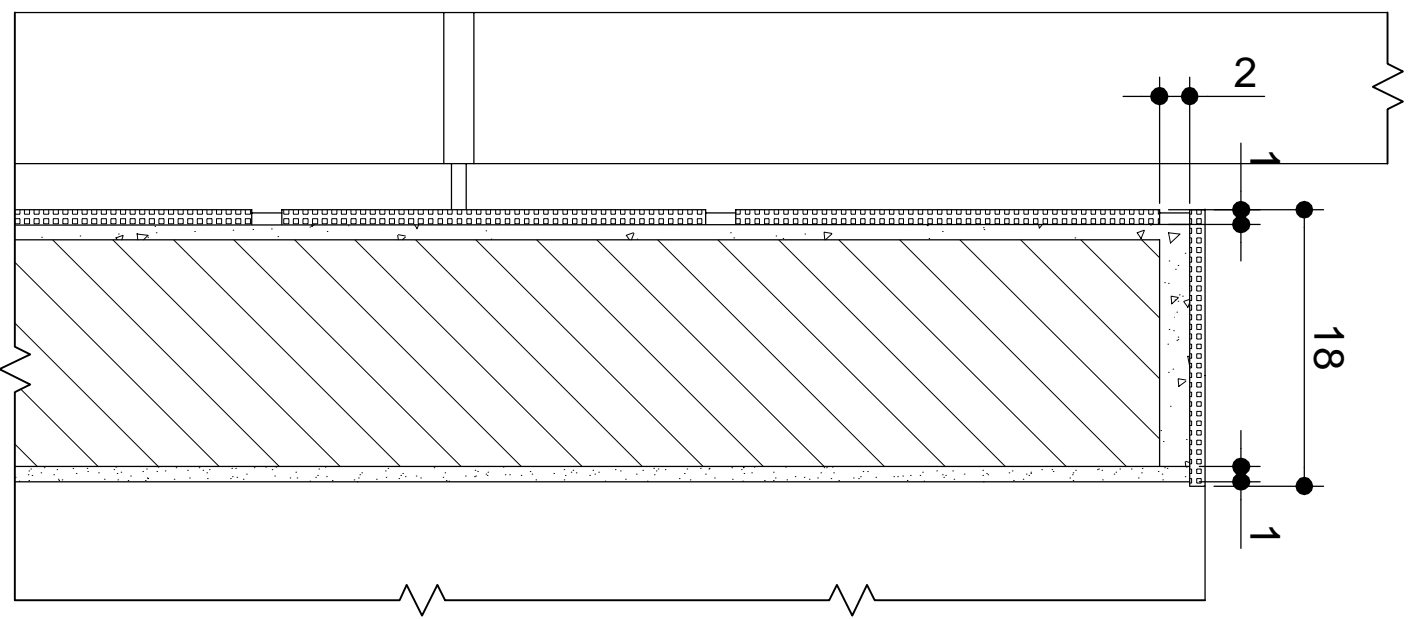
quote in cm  
scala 1:5



# NODO C'''

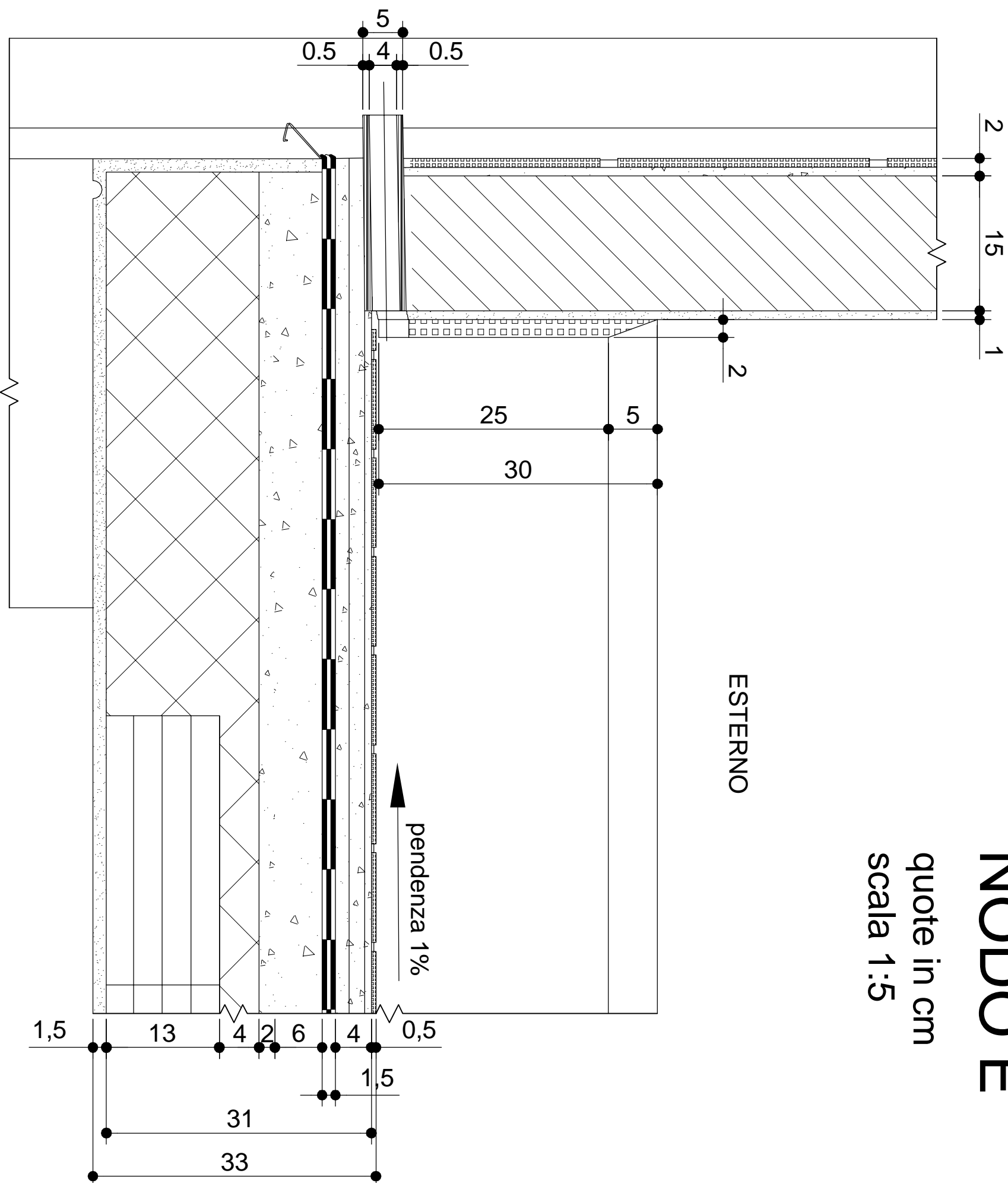
quote in cm  
scala 1:5





# NODO D

quote in cm  
scala 1:5



# NODO E

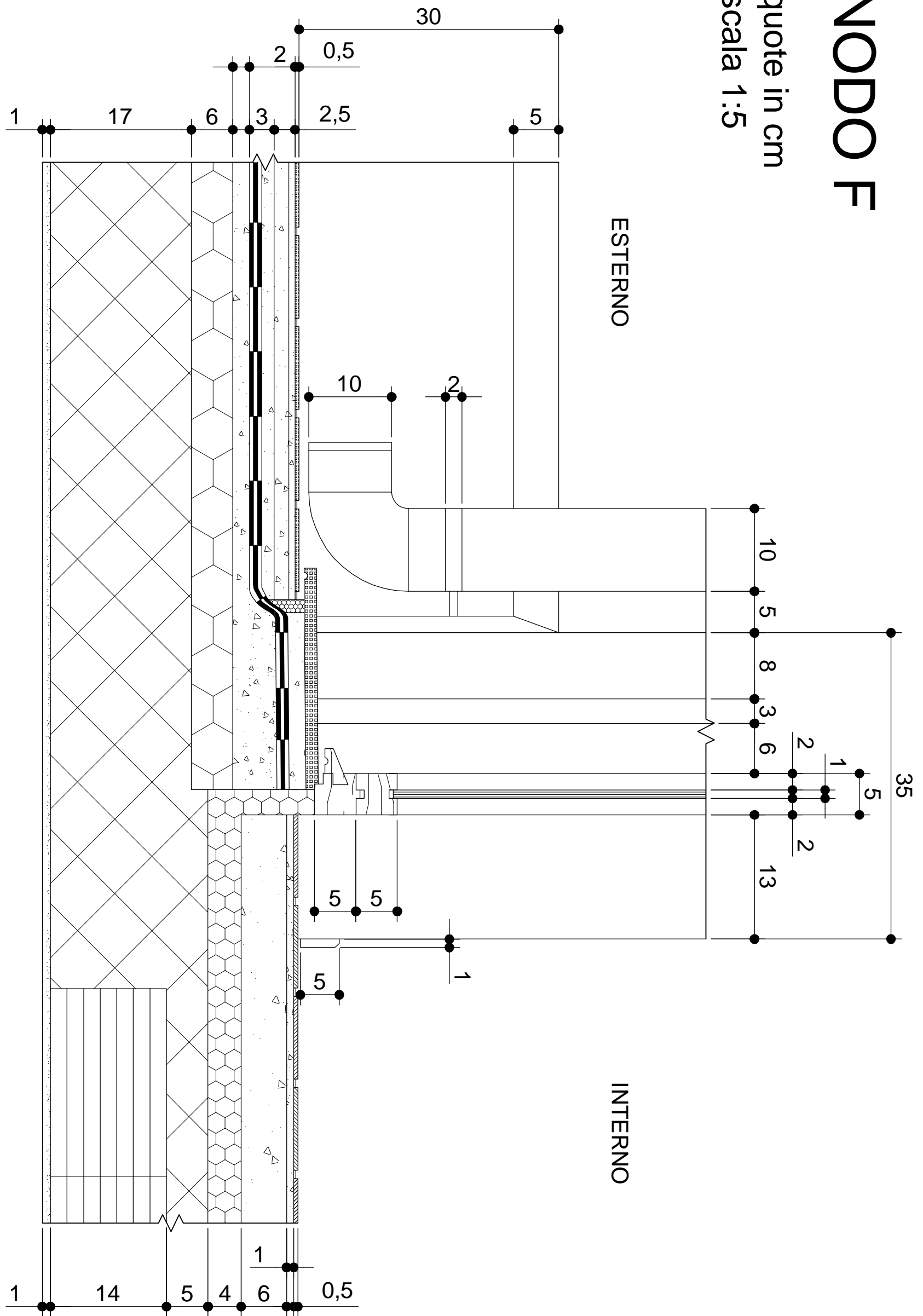
quote in cm  
scala 1:5

ESTERNO

pendenza 1%

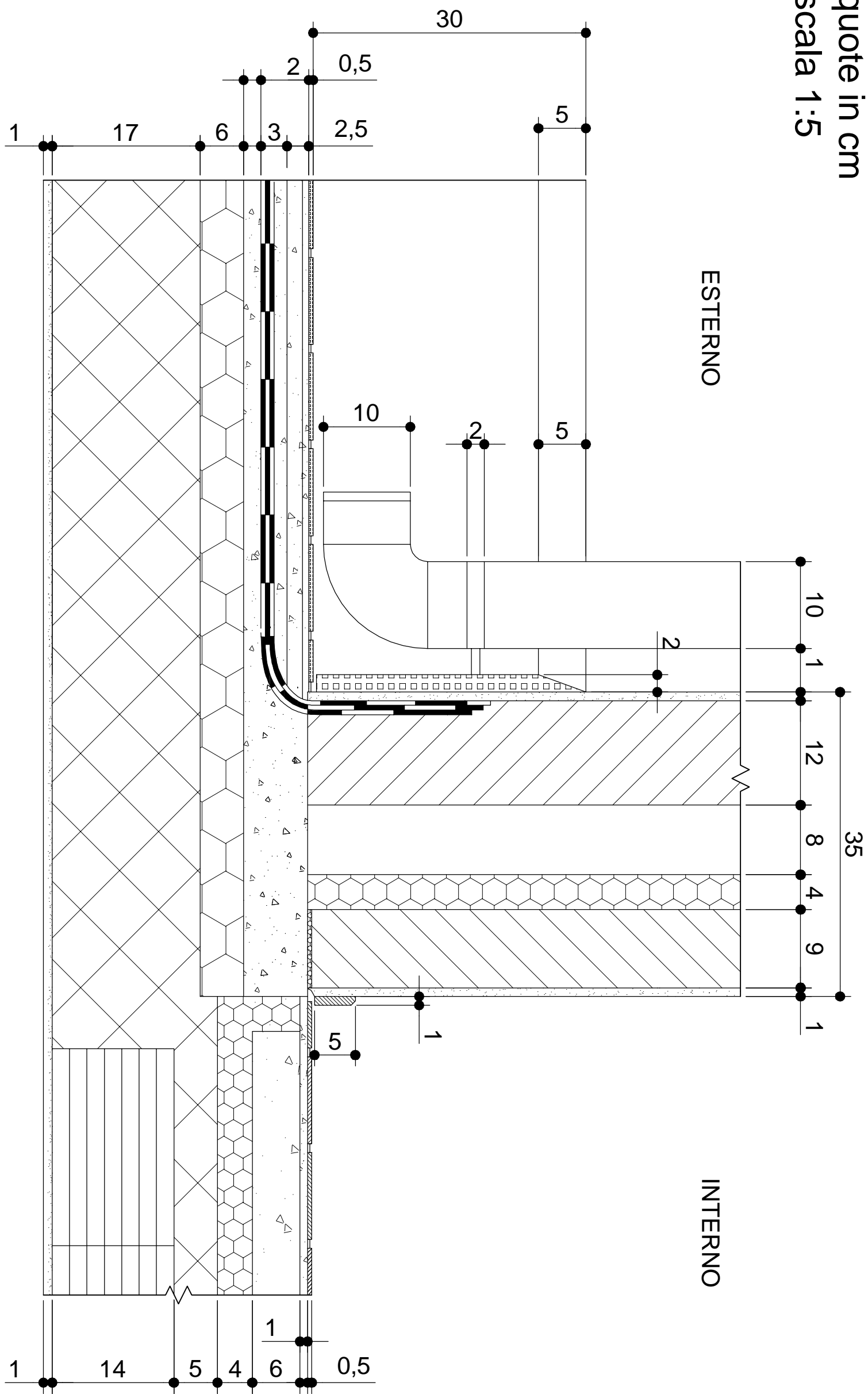
# NODO F

quote in cm  
scala 1:5



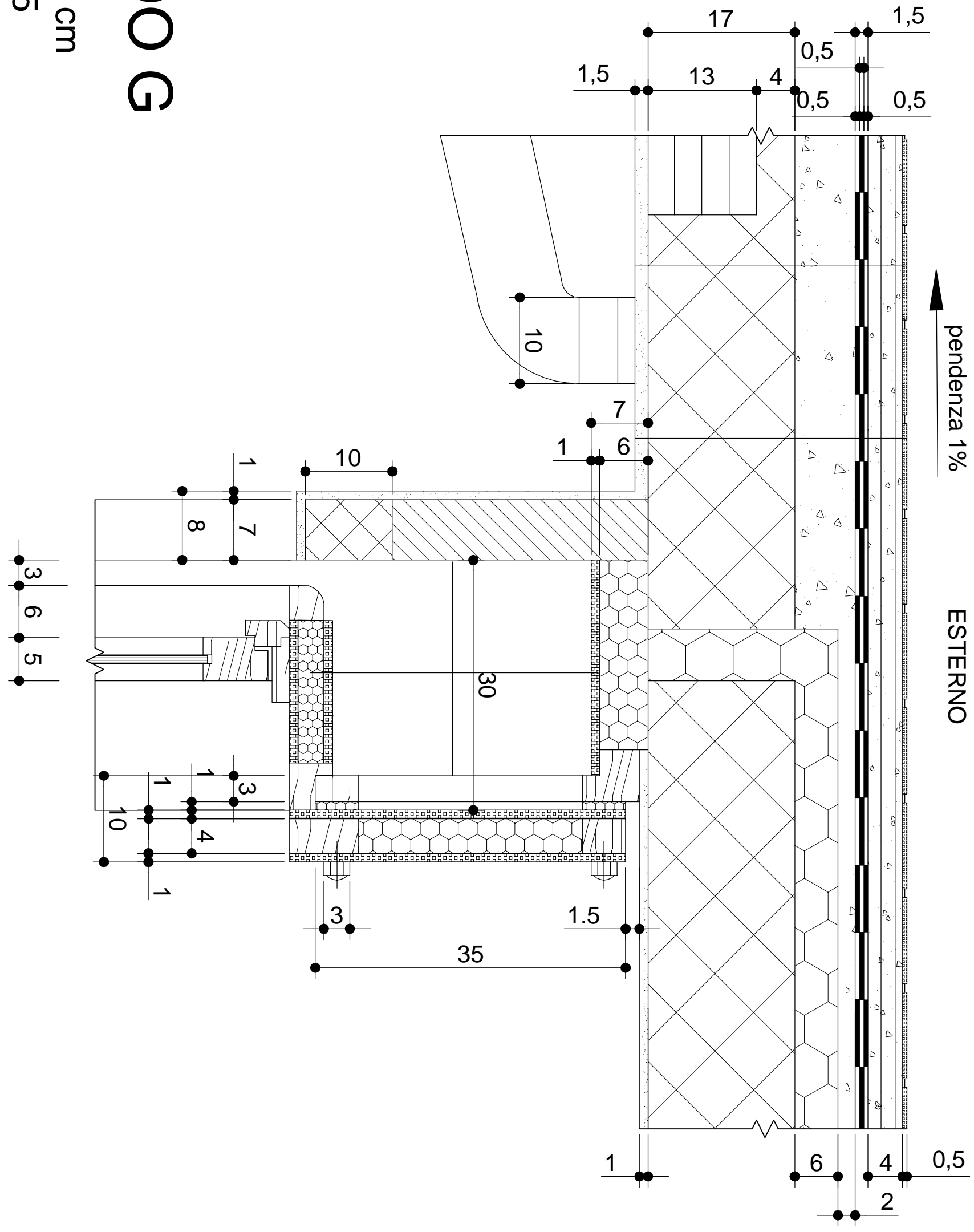
# NODO F'

quote in cm  
scala 1:5



# NODO G

quote in cm  
scala 1:5

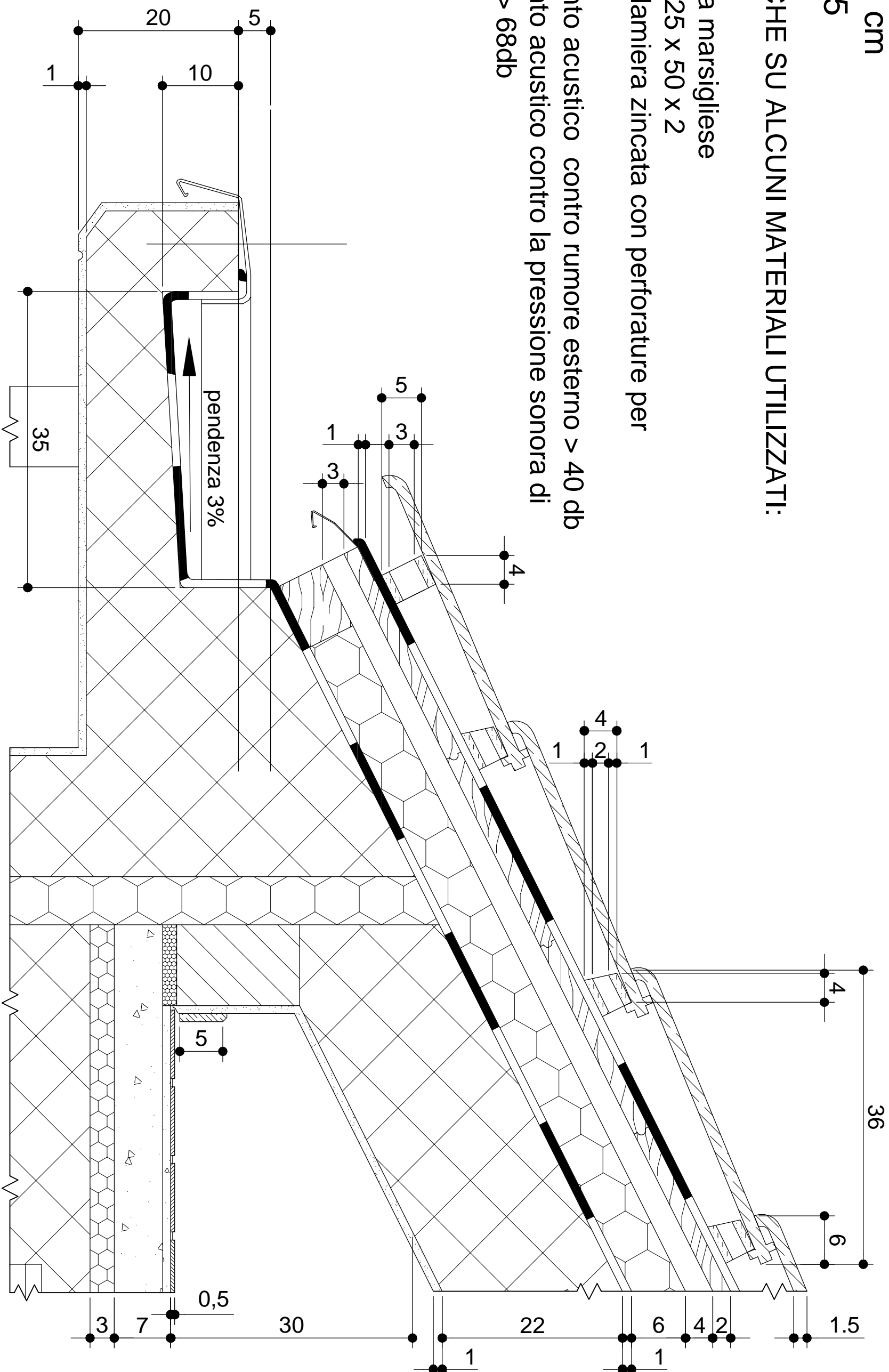


# NODO H

quote in cm  
scala 1:5

SPECIFICHE SU ALCUNI MATERIALI UTILIZZATI:

- coppi alla marsigliese
- tavolato 25 x 50 x 2
- listelli in lamiera zincata con perforature per aerazione
- isolamento acustico contro rumore esterno > 40 db
- isolamento acustico contro la pressione sonora di calpestio > 68db

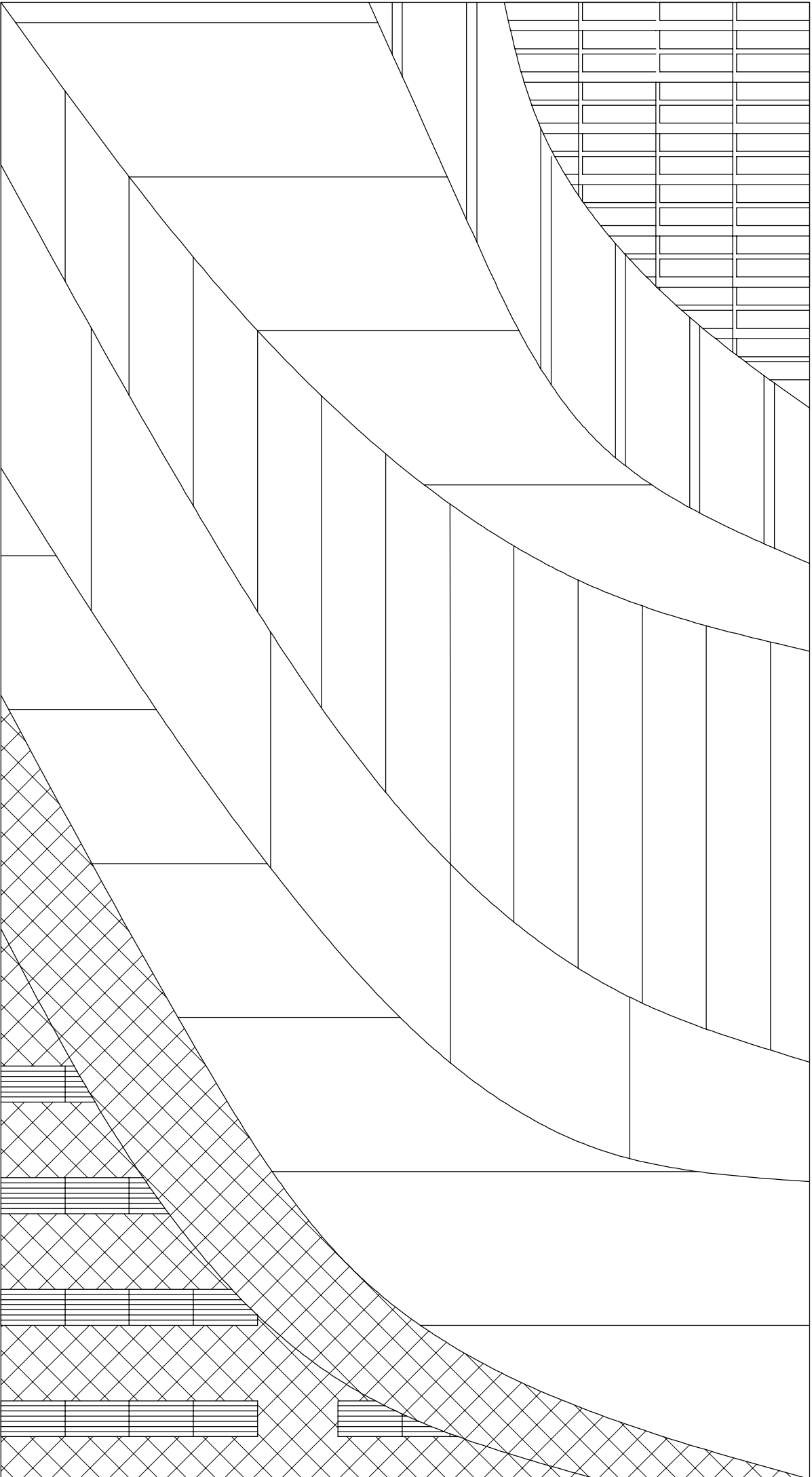


Progetto tecnologico di copertura inclinata

TAV. 15

STRATIGRAFIA DELLA COPERTURA INCLINATA  
DURANTE SUCCESSIVE FASI DI LAVORO

scala 1 : 20



Progetto tecnologico di copertura inclinata

TAV. 16